

The background of the entire image is a light blue architectural blueprint. It features various lines, rectangles, and circles representing building plans. In the upper left, there is a text label 'SEE NOTE 5' oriented vertically. The main title 'Spiegelglass Construction Company' is centered in a large, bold, blue font with a slight drop shadow. Below the title, the tagline 'Your blueprint for success. Since 1904.' is written in a smaller, bold, orange font. At the bottom, a solid orange horizontal bar contains the website address 'www.spiegelglass-gc.com' in white text.

# Spiegelglass Construction Company

**Your blueprint for success.  
Since 1904.**

[www.spiegelglass-gc.com](http://www.spiegelglass-gc.com)



# About Us

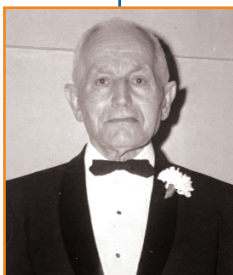
Based in St. Louis, Spiegelglass Construction Company has been a family-owned general contractor since its inception in 1904. The company's client portfolio includes national chains and independently-owned businesses, and spans industries including retail shops, restaurants and interior finishes.

With an exclusive focus on commercial construction, the company's leaders combine a personal passion for turning their clients' visions into reality with the know-how of a company that has been in business for more than 110 years.

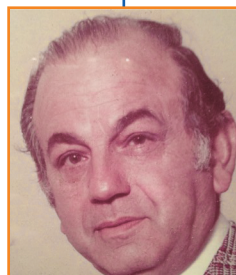
The company enjoys an honorable, well-deserved reputation among clients, subcontractors and business associates for closely adhering to the values that have sustained the business since 1904.

Rooted in integrity,  
Spiegelglass  
Construction stands  
above its peers with  
its personalized  
client service,  
unparalleled  
craftsmanship and  
a commitment to  
excellence.

## CREATORS OF A LEGACY | 110 YEARS



Joe  
Spiegelglass



Harold  
Spiegelglass



Mel  
Spiegelglass



Barry  
Spiegelglass



Tim  
Spiegelglass



# Services

## RETAIL EXPERTISE

Whether doing a mall buildout or renovating within a strip center, retail spaces need to serve both aesthetic and functional purposes. There are unique skillsets associated with retail construction - including carefully synchronizing installation schedules and maintaining a focus on maximizing sales per square foot - and clients need a general contractor that can work with accelerated schedules and tight budgets.

Spiegelglass Construction builds spaces to last, and has earned spots on the coveted “preferred contractor” lists at numerous mall operators throughout the Midwest. The company has worked again and again for well-known national retailers due to consistent on-time and within-budget store turnovers.

## SERVICES WE OFFER

- Project Planning
- Pre-Construction
- General Contracting
- Construction Management
- Value Engineering
- Ground Up
- Design-Build
- Remodeling

“For us the key is to build the relationship and partner with our clients for the long-term. We do that by keeping high standards and delivering projects on time.”

-Barry Spiegelglass,  
President







# Projects



## SHANE COMPANY : ST. LOUIS, MO

Shane Company owners asked Spiegelglass to turn a 17,000 square foot grocery store into the “biggest jewelry store in the Midwest”. In just 16 weeks, Spiegelglass renovated the interior with improvements including LED lighting to showcase the products, and the exterior which included specially sourced stones from Italy and Rudy Art Glass for the windows.

## TOWN & COUNTRY VETERINARY HOSPITAL : TOWN AND COUNTRY, MO

Spiegelglass worked with Dr. Stacey Wallach to create a state-of-the-art veterinary hospital with Epoxy floors and the necessary space needed to serve pets and pet owners alike. In just nine weeks, Spiegelglass built the 3,000 square foot space while following all veterinary guidelines and ensuring a clean and sanitary environment for both owners and pets.



## MITCHELL GOLD + BOB WILLIAMS : CHICAGO, IL AND FRONTENAC, MO

In Chicago’s Oakbrook Shopping Center and St. Louis’ Frontenac Plaza, Spiegelglass built two awe-inspiring “Signature Stores” for the home furnishing brand with fine touches including white marble floors and Level Five drywall finishes. The Frontenac location combined two previously occupied split level stores using ramps and stairs, while the Oak Brook location included a magnificent 230 foot long by 30 foot tall storefront.



## KOHLER SHOWROOM : ST. LOUIS, MO

Spiegelglass was charged with the crucial task of maintaining brand standards and design integrity for the seventh KOHLER showroom in the U.S., and the first in St. Louis. The company built out flawless transitions since each area has distinct finishes, and mastered the intricate plumbing and electrical requirements for the showering solutions and controls.





### OMEGA WATCH : PLAZA FRONTENAC - ST. LOUIS, MO

High-end watches demand a high-end storefront, and Omega's Frontenac location is no exception. Spiegelglass was asked to receive, inspect and install more than 30 custom-made Italian fixtures, and build or install - to exacting standards - custom casework, an alarm system and security glass.



### HELIUM COMEDY CLUB : ST. LOUIS, MO

Based on a recommendation from the St. Louis Galleria, the owners of Helium asked Spiegelglass Construction to build out an 11,000 square foot space for their comedy club and restaurant. Spiegelglass gutted the lower level to construct the performance areas, bars and restaurant, coordinated mechanical with neighboring construction projects, and managed low voltage wiring to ensure proper A/V and lighting for the stages.



Shane Company



Omega Watch



KOHLER

Ann Taylor  
 AT&T Retail Store  
 Build-A-Bear  
 Cache  
 Crate & Barrel  
 D.O.C. Optical  
 Dollar General  
 Forever Flawless  
 Harold's  
 Hot Mama  
 Journey Kidz  
 KOHLER Signature Store by Crescent  
 Louis Vuitton  
 Maurice's  
 Mitchell Gold + Bob Williams  
 Omega Watch  
 Passport Luggage  
 Perfume Plus  
 Saks Fifth Avenue  
 See Eyewear  
 Shane Company  
 The Children's Place  
 The Fur and Leather Exchange  
 The ScholarShop Foundation  
 The Summit  
 The Woman's Exchange  
 Williams Sonoma



# Partnerships



Mitchell Gold  
+ Bob Williams







# Media Recognition

## ST. LOUIS BUSINESS JOURNAL

FROM THE NOVEMBER 4, 2016 ST. LOUIS BUSINESS JOURNAL

### Menu staple: Builder Spiegelglass at 350 Paneras and growing

Wasabi Sushi Bar CEO John Kim was unsure whether St. Charles would be a good spot for his restaurant chain's next location. Its Town & Country location has a lounge area where guests can order drinks while waiting for their tables, but the St. Charles location he was scouting last year, at 1650 Beale St., had as its neighbor a Bar Louie, which touts its "bar experience."

Tim Spiegelglass, co-owner of Spiegelglass Construction Co., which specializes in restaurant and retail builds, told him to focus on the restaurant concept and not compete with Bar Louie as a bar setting, Kim said.

"He provided some great input to make our St. Charles location better," Kim said. "You keep what works. And what doesn't work, you change." Finding a niche in construction and providing insight on a build before a client signs a lease, Spiegelglass said, is how his company survived the recession. The commercial contractor in 2009 moved to a cloud-based system, enabling it to downsize its office, and also subcontracted more work. Spiegelglass Construction, which has 10-15 employees, earned \$10 million in revenue last year and is on track to earn that again this year, he said.

Wasabi — which now has seven St. Louis-area locations, including the St. Charles site, and one in Lakewood, Colorado — is one of several long-term

clients of the Maryland Heights-based construction company. It's also built restaurants for the First Watch chain here, as well as KISS bandmates' Gene Simmons and Paul Stanley's Rock & Brews restaurant in Chesterfield that's set to open Nov. 7.

Other Spiegelglass projects include the \$3 million renovation of The Sound Room in Chesterfield, the \$750,000 Slider House restaurant in Rock Hill and the \$1.6 million Bonefish Grill in Brentwood. Spiegelglass' biggest client is Panera Bread Co., for which it has built over 350 locations in the Midwest since 1991. The fourth-generation, family-owned company, founded over 100 years ago, credits Panera for developing its restaurant niche.

"You don't continue to work with a client like that and not deliver on time and on budget," Spiegelglass said.

The construction firm is pushing for bigger growth (it also builds facades on strip centers), and he is looking to hire two project managers and focus on franchise restaurants and retail builds. According to Spiegelglass, franchises are "always expanding and always have jobs."

Steph Kukuljan | Reporter. *St. Louis Business Journal*



#### YOU'VE LIKELY DINED AT A SPIEGELGLASS- BUILT RESTAURANT:

- ▶ The Slider House, Rock Hill
- ▶ Bonefish Grill, Brentwood
- ▶ Wasabi Sushi Bar, multiple locations
- ▶ Vin de Set
- ▶ Brio Tuscan Grill
- ▶ Fleming's
- ▶ First Watch, multiple locations
- ▶ Panera Bread Co., multiple locations

DILIP VISHWANATH | SLBJ





# Client References | Testimonials



## Steve Rotskoff, Co-Owner

KOHLER Signature Store  
by Crescent Supply Co.  
314.727.4200 x 1127  
[steve@crescentsupply.com](mailto:steve@crescentsupply.com)



## Steve Etzel, Director of Construction

Epoch Design Group  
314-721-1340 x109  
[etzel@epochdesigngroup.net](mailto:etzel@epochdesigngroup.net)



## Dave Freeburg, General Manager General Growth Properties

Plaza Frontenac  
314-432-6760  
[David.freeburg@ggp.com](mailto:David.freeburg@ggp.com)



## John Hanlon, Owner

The Fur and Leather Centre  
314-997-3877  
[hanlongenny@aol.com](mailto:hanlongenny@aol.com)



“Building the first KOHLER showroom in St. Louis was a complex job... we had high expectations, and since this was just the seventh showroom in the U.S. it was crucial to have every detail just right.

**At the end of the day, we are showcasing high-end products and the build out needed to be impeccable.**

Spiegelglass was polished and professional at every stage  
- they were attentive, met our tight deadlines and delivered on quality. We strongly recommend Spiegelglass Construction, especially for jobs where every detail counts.”

- Steve Rotskoff

*Co-Owner of KOHLER Signature Store by Crescent Supply*

“I rely heavily on my GC partners to deliver high quality retail spaces,  
**and Spiegelglass Construction consistently delivers.**

When I award a project to Spiegelglass I can rest easy knowing all partners involved including the client, architect and landlord will be elated with the final product.”

- Steve Etzel

*Director of Construction at Epoch Design Group*



The background is a detailed architectural blueprint of a building floor plan, rendered in a light orange color. It shows various rooms, corridors, and structural elements. Overlaid on this is a solid, darker orange rectangular area that serves as a backdrop for the company name and tagline.

# Spiegelglass Construction Company

Your blueprint for success.  
Since 1904.

Contact:

Tim Spiegelglass | 314-569-2300

[tim@spiegelglass-gc.com](mailto:tim@spiegelglass-gc.com)

[www.spiegelglass-gc.com](http://www.spiegelglass-gc.com)